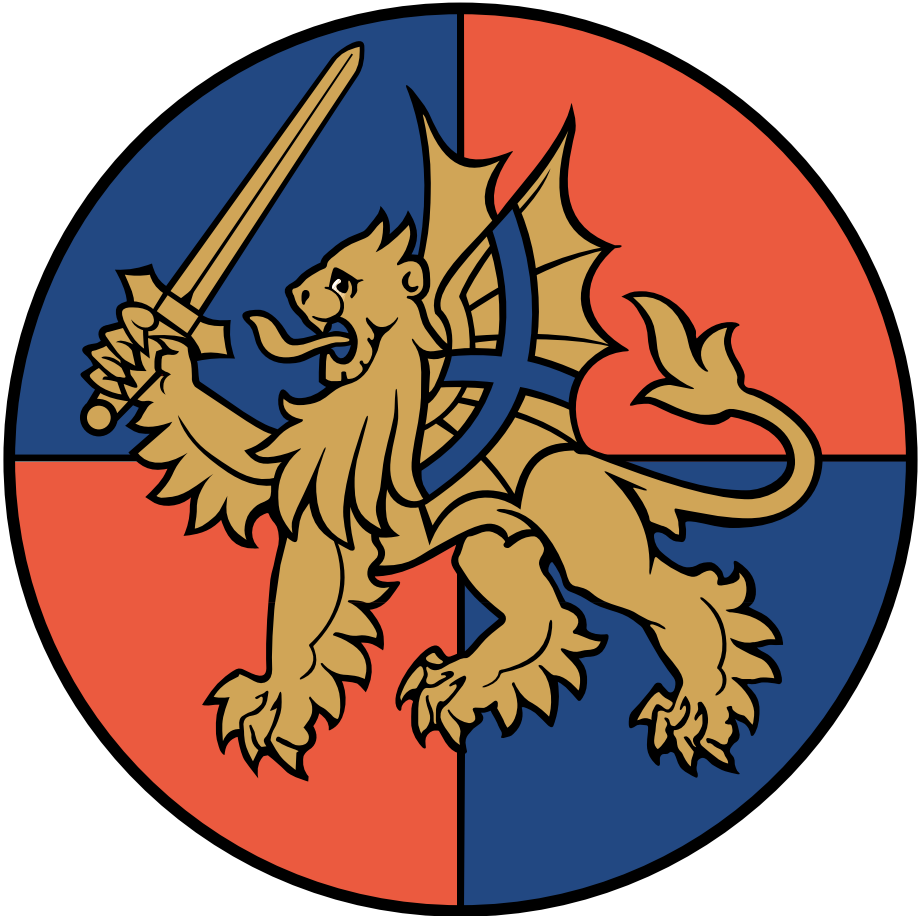




ARMY

Force Troops Command

Overview and Brigades





Contents

Contents.....	3
Foreword.....	4
Force Troops Command Statistics	5
FTC Prioritisation	7
1st Artillery Brigade and Headquarters South West	9
1st Intelligence, Surveillance and Reconnaissance Brigade.....	11
8 Engineer Brigade	13
The Engineer and Logistic Staff Corps.....	15
1st Signal Brigade	17
11th Signal Brigade and Headquarters West Midlands	19
104 Logistic Support Brigade.....	21
2nd Medical Brigade.....	23
1st Military Police Brigade.....	25
The Security Assistance Group.....	27
Joint Ground Based Air Defence	29
Structure - Overview.....	30
Definitions.....	39

Foreword



Major General Tim Radford DSO OBE
(Late Light Infantry)

Force Troops Command (FTC) has been designed to deliver the Combat Support, Command Support, Combat Service Support and Specialist Support required by Joint, Reaction and Adaptable Forces, as well as Other Government Departments. The Command will Force Generate and Force Prepare integrated Regular and Reserve capabilities to support training and operations, in line with operational requirements. FTC will provide a potent mix of specialist, cutting-edge capabilities and, as a 2-star Command, will build on its formations' operational experience to deliver operational capability.

By the end of 2015, FTC will be the largest of the Army's formations with a quarter of all Army Regular liability and almost

half of the Reserves¹. Combined, these will make up 1/3rd of the Whole Force. It will consist of nine functional Brigades, and the Engineer and Logistic Staff Corps. It comprises 115 units and formation headquarters, with representation from 16 cap badges. FTC also has Coordinating Authority over the Joint Ground Based Air Defence Brigade. FTC will hold 45% of all Land Forces equipment. This includes approximately 550 armoured, 700 protected mobility and 4970 support vehicles².

Under Army 2020, there will be a new emphasis on international Defence Engagement and a rearranging of responsibilities for the Firm Base³. 8 Engineer Brigade and 11th Signal Brigade will assume responsibility for South East Asia and Southern Africa respectively. In addition, by the summer of 2015, Headquarters 11th Signal Brigade will assume responsibility for national Regional Point of Command (RPOC) West Midlands and Headquarters 1st Artillery Brigade will assume responsibility for RPOC South West.

Ex GRIFFIN HERALD demonstrates some of the capability that sits in Force Troops Command. I hope you find it useful and that it gives you the opportunity to gain a greater understanding of how a key part of the Army will operate in future.

Force Troops Command Statistics ⁴

Units:

OPCOM Brigades: 9 (and the Engineer and Logistic Staff Corps)

Total units: 115
Regular units: 55
Reserve units: 41
Hybrid units: 19

Personnel:

C. Regular: 21800
C. Reserve: 14200
C. Civil Servants: 1250

Size:

C. 25% of all Army Regular liability
C. 49% of all Army Reserve liability
C. 45% of Land Forces equipment

Equipment:

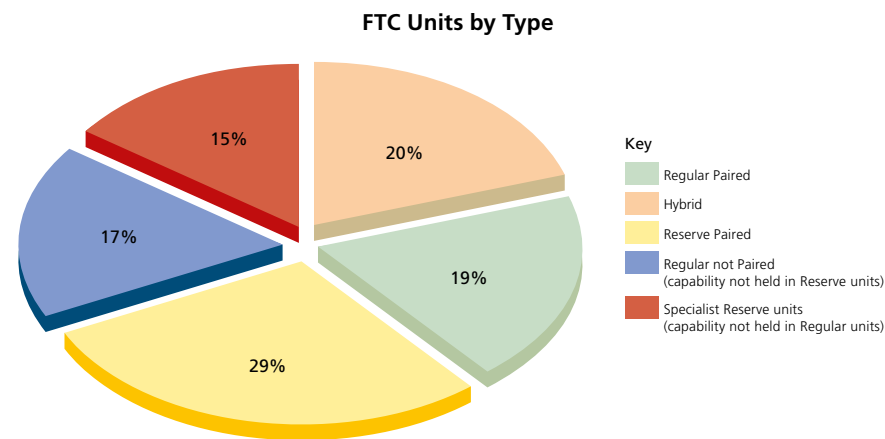
C. 45% of all Land Forces equipment
C. 550 armoured vehicles
C. 700 protected mobility vehicles
C. 4970 support vehicles.

Unit moves:

FTC has 61% of the Army 2020 unit moves

C. 64% of FTC Regular units will move during the A2020 changes

23 FTC unit moves will take place between 2013 and 2016



1. During the A2020 transition period, FTC will peak at approximately 44,000 before settling at approx 37,500. The Command will comprise approximately 21700 Regulars, 14200 Reservists, 620 FTRS(HC) and NRPS, and 1250 civilians.

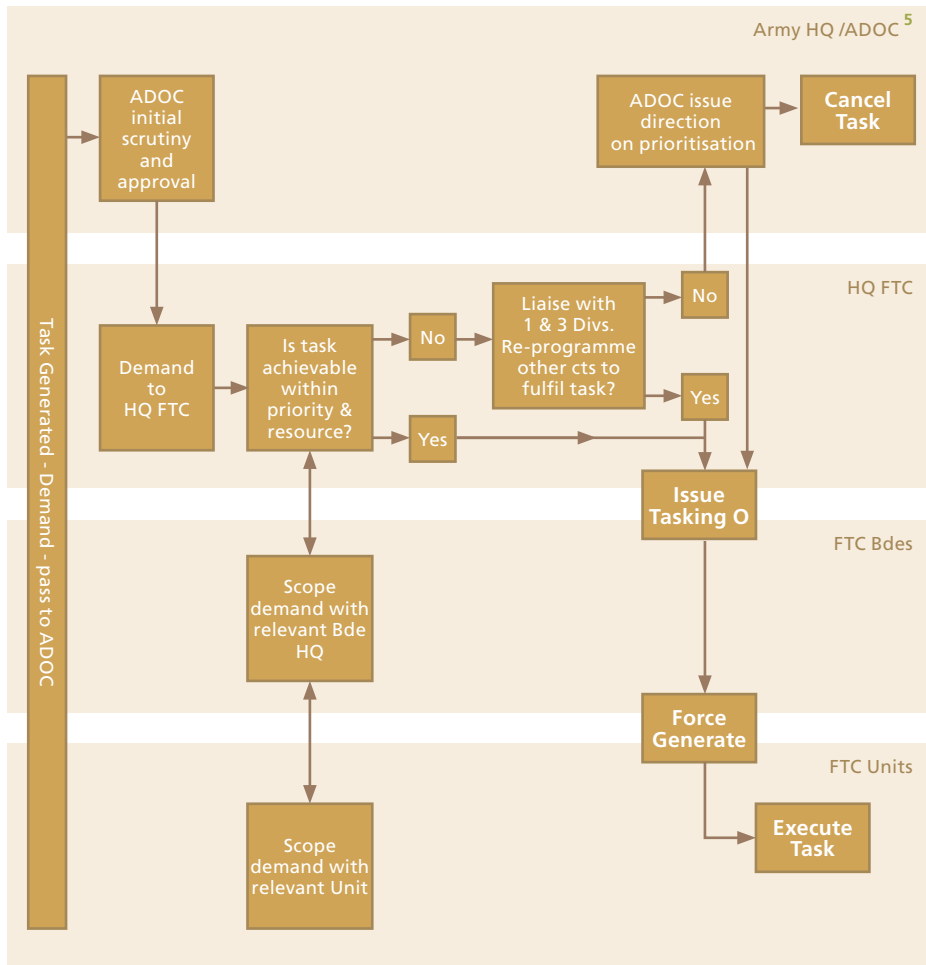
2. Director Equipment A2020 Equipment Liability Plan V20.3.

3. A Firm Base definition is on page 39.

4. Army 2020 as at March 2014.



FTC Prioritisation



Army Headquarters will direct the prioritisation of FTC activity through Commander Land Forces' Directive and the Army Readiness Order (VANGUARD and Active Edge). FTC Force Elements (FEs) will be allocated to the Army Force Preparation Schedule in accordance with that direction. Additional tasks will be directed to FTC by the Army Directorate of Operations and Commitments (ADOC). Tasks cannot be directed to individual units or brigades without ADOC and HQ FTC authorisation.

HQ FTC G3 Branch will scrutinise additional tasks with the relevant FTC brigade(s) to establish if they are

achievable within existing priorities and available FEs. If this is the case, a formal tasking will be issued generating the FE to support the demand. If appropriate resources are not available, HQ FTC will re-programme existing commitments with the relevant command, working to ADOC priorities.

FTC brigades are configured with FEs designed to support the Reaction Force (RF) or the Adaptable Force (AF). As a principle, and in line with VANGUARD priorities, units that conduct their training year together will be held at readiness together.



5. The role of the ADOC is to generate forces in response to MOD direction in order to ensure that the Nation's requirement for Army activity is met in a timely, efficient and effective manner.



1st Artillery Brigade and Headquarters South West (1 Arty Bde & HQ SW)

HQ Location	Tidworth, Wiltshire ⁶ .
Role	The provision of Offensive Support for Land Forces
Additional Responsibility	South West Regional Point of Command.
Composition	7 Regular units and 3 Reserve units (approximately 2680 Regular and 1570 Reservist personnel).

1st Artillery Brigade will command the Army's Close Support Artillery Regiments and provide special-to-arm oversight for the two Very High Readiness regiments in the Air Assault and Commando Brigades. It will integrate Joint Fires through the provision of Targeting, Battle-space Management, and Air/Land integration. The Brigade Headquarters will also provide a deployable Joint Fires Cell as part of a deployed divisional headquarters.

1st Artillery Brigade will form up on 1 September 2014 and will comprise ten artillery units. The Brigade will have three Regular 155 mm Artillery System 90 Regiments, each with a Regular Multi-Launch Rocket System (MLRS) battery, two Regular and two Reservist 105 mm Light Gun Regiments, and a Reservist MLRS Regiment. In addition, the Brigade

will command the Battlefield Coordination Detachment (Air), which provides the Army's Forward Air Controllers and Tactical Air Control Parties, and the Central Volunteer Headquarters Royal Artillery (CVHQ RA), which provides the All-Arms Watchkeeper Pool.

From 1 January 2015, the Brigade Headquarters will assume responsibility for the South West Regional Point of Command (RPoC). The RPoC acts as the vital link between the Army and local communities, and is responsible for recruiting support, the Regional Army Cadet Force, Brigade Reinforcement Teams, Personnel Recovery Units and supporting Service personnel as they transition to civilian life. The RPoC also provides the Command and Control structure for UK resilience operations.

⁶ The Brigade's Headquarters will form in Tidworth, but may subsequently move to Larkhill as part of the future Army Basing Plan.



1st Intelligence, Surveillance and Reconnaissance Brigade (1 ISR Bde)

HQ Location	Upavon, Wiltshire.
Role	The provision of Intelligence, Surveillance and Reconnaissance capabilities for Land Forces and Joint operations.
Composition	11 Regular and 9 Reserve units (approximately 4100 Regular and 2000 Reservist personnel).

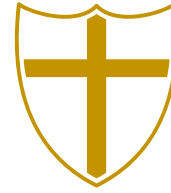
1st Intelligence, Surveillance and Reconnaissance Brigade will form up on 1 September 2014 and will deploy Intelligence, Surveillance and Reconnaissance (ISR) groups tailored to support decision making within the Land Environment. This will enable the integration of collection assets to generate the production of a coherent intelligence picture. The Brigade will be a critical enabler throughout the continuum of engagement.

14th Signal Regiment (Electronic Warfare) delivers a persistent ground based Electronic Warfare and Signals Intelligence capability. 5th Regiment Royal Artillery (RA) provides the Army's Weapon Locating Radar, Medium and Heavy Ground-Based Intelligence Surveillance Target Acquisition and Reconnaissance capabilities. It also provides a battery of Surveillance and Target Acquisition (STA) patrols trained in Static Covert Surveillance. The Honourable Artillery Company also provides STA Patrols and Light Ground-Based Intelligence and is paired with 5th Regiment RA. 32nd and 47th Regiments RA provide the Army's Integrated Unmanned Aerial Systems

(IUAS). Both Regiments are supported by 104th Regiment RA, which will operate the Watchkeeper UAS.

The three Regular and four Reserve Military Intelligence (MI) Battalions provide the full spectrum of MI capabilities to Land Forces. They provide a conduit into the Single Intelligence Enterprise to ensure that information is shared with Joint, Interagency, Inter-governmental and Multi-National capabilities. MI Battalions are supported by the Weapons, Material and Personnel Exploitation capability. In addition, the Defence Cultural Specialist Unit provides linguists and cultural specialists.

The Land Intelligence Fusion Centre delivers tactical intelligence reach-back for deployed forces. The Specialist Group Military Intelligence is a unique nationally recruited pool of professionally trained Reservists whose expertise augments the Brigade's MI capabilities. Finally, the Brigade will field a number of specialist Human, Environment, Reconnaissance and Analysis patrols drawn from Reservist Units.



8 Engineer Brigade (8 Engr Bde)

HQ Location	Minley, Hampshire.
Role	The provision of the full spectrum of Military Engineer capability for Land Forces.
Additional Responsibility	Defence Engagement responsibility for South East Asia.
Composition	12 Regular units, 4 Reserve units and 9 Hybrid units (approximately 7000 Regular and 3000 Reservist personnel).

8 Engineer Brigade commands the Army's Royal Engineer capability. The Brigade is built upon four Specialist Groups delivering Force Support, Infrastructure Support, Close Support and Explosive Ordnance Disposal and Search.

25 (Close Support) Engineer Group provide mobility, counter-mobility and survivability for forces manoeuvring in the Land Environment. With state-of-the-art capabilities such as Titan (gap crossing), Trojan (route opening and obstacle clearance) and Terrier (obstacle clearance, building anti-tank ditches, trenches and other obstacles) the Group will support both the Reaction and Adaptable Forces.

12 (Force Support) Engineer Group provides support to Theatre Entry, including route maintenance and enabling airfield operations. The Lead Air

Support Squadron supports the Royal Air Force to facilitate the rapid deployment of Air operations.

170 (Infrastructure Support) Engineer Group will design, resource and construct the infrastructure to sustain a deployed force. Its ability to assess, repair and re-establish infrastructure will provide a vital capability in post-conflict environments.

29 Explosive Ordnance Disposal and Search Group will support both deployed operations and Homeland Defence. The Group locates and disposes of conventional and improvised explosive threats. It provides technical expertise to ensure that the Army's ammunition is fit for purpose and all forms of Search capability including Military Working Dog support.



The Engineer and Logistic Staff Corps (E&LSC)

The Engineer and Logistic Staff Corps (E&LSC) are a select group of 60 non-deployable Reservist advisors with senior business experience in engineering, logistics, communications, and commercial matters. They provide expert advice and specialist knowledge to operations and training through liaison and education.

Members of the E&LSC are commissioned as Royal Engineers Reservist officers. They offer professional and technical advice from an industry and commercial perspective. Their civilian roles are often at Chief Executive, Chief Operating Officer or Chief Engineer level. The Corps has an establishment of 10 Colonels, 20 Lieutenant Colonels and 30 Majors.





1st Signal Brigade (1 Sig Bde)

HQ Location	Innsworth, Gloucestershire.
Role	The provision of Information and Communications Services (ICS) and Command Support capabilities in support of National, Coalition and NATO operations in the Land Environment.
Composition	4 Regular units and 1 Regular sub-unit (approximately 1725 Regular and 20 Reservist personnel).

1st Signal Brigade is, uniquely, under the Operational Command of both Force Troops Command and the Allied Rapid Reaction Corps (ARRC). The Brigade provides Force Elements at readiness to the ARRC, Permanent Joint Headquarters (PJHQ), the Joint Helicopter Force and Other Government Departments.

The ARRC Support Battalion is responsible for providing the Staff Working Environment, Real Life Support and the Force Protection for Headquarters ARRC.

22 Signal Regiment provides the ICS to enable Commander ARRC to exercise command over the Corps.

30 Signal Regiment is responsible for enabling PJHQ's deployable Joint Force Headquarters and supporting other High Readiness Formations such as the Very High Readiness Field Hospital, the Air Assault Task Force and Joint Helicopter Command. 299 Signal Squadron (Special Communications) provides specialist communications support worldwide.



11th Signal Brigade and Headquarters West Midlands (11 Sig Bde & HQ WM)

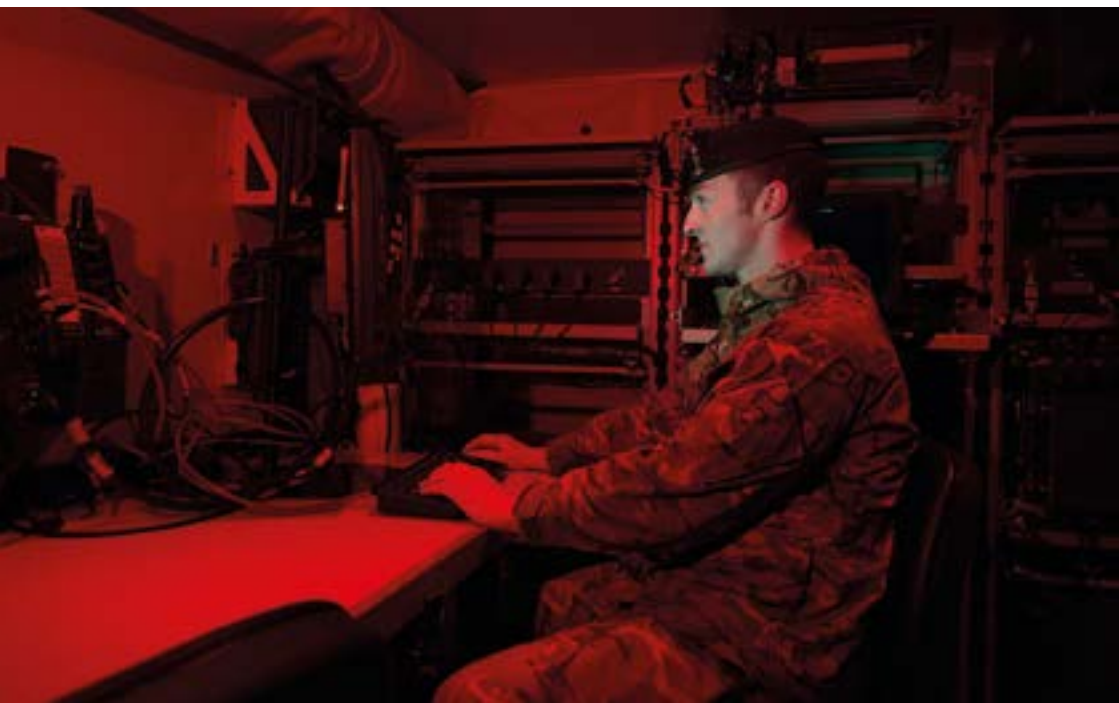
HQ Location	Donnington, Shropshire.
Role	The provision of command Information and Communications Services (ICS) and Electronic Warfare (EW) capabilities for Land Forces.
Additional Responsibility	West Midlands Regional Point of Command and Defence Engagement responsibilities for Southern Africa.
Composition	8 Regular units, 4 Reserve units and 2 Hybrid units (approximately 3270 Regular and 1800 Reservist personnel).

11th Signal Brigade Force Generates the Army's ICS and EW capability for current and contingent expeditionary and UK operations. It provides Force Elements to the Air Assault Task Force, Other Government Departments and contributes to Cyber Operations. The Brigade is built upon 2 specialist Groups.

2nd Signal Group comprises two Hybrid Regiments, four Reserve Regiments and one Specialist Reserve Signal unit. The Group provides ICS to current and contingent operations, including homeland resilience. 2nd Signal Group is also prepared to reinforce 7th Signal Group with specialist Force Elements for training and operations.

7th Signal Group comprises 5 Regular Multi-Role Signal Regiments, which provide tactical, operational and strategic communications for contingent operations, particularly at brigade and divisional headquarters level.

From July 2015, the Brigade Headquarters will assume responsibility for the West Midlands Regional Point of Command (RPoC). The RPoC acts as the vital link between the Army and local communities, and is responsible for recruiting support, the Regional Army Cadet Force, Brigade Reinforcement Teams, Personnel Recovery Units and supporting Service personnel as they transition to civilian life. The RPoC also provides the Command and Control structure for UK resilience operations.





104 Logistic Support Brigade (104 Log Sp Bde)

HQ Location	South Cerney, Gloucestershire.
Role	The provision of Theatre Entry and Logistic Enabling capabilities for Land Forces and Joint Operations.
Composition	4 Regular and 8 Reserve units (approximately 1060 Regular and 2040 Reservist personnel).

104 Logistic Support Brigade is the Army's Theatre Logistic Enabling Brigade. It can command up to a 1-star Headquarters National Support Element (HQ NSE) and deploy Force Elements to activate strategic and operational Lines of Communications, mount and deploy forces, and deliver specialist logistic effects in support of Joint expeditionary and enduring operations.

provides Very High Readiness Port Task Groups, Port Reconnaissance Teams and Diving Teams to enable and operate 'ship to shore' operations across the world.

29 Regiment and its paired Reservist Unit, 162 Regiment, deliver the Army's deployable Postal, Courier and Movement Control capabilities. 29 Regiment also operates the Joint Air Mounting Centre.

17 Port and Maritime (P&M) Regiment and its paired Reservist unit (165 Port Regiment), deliver the Army's capability to deploy and redeploy by sea. 17 P&M Regiment also operates the Sea Mounting Centre in Marchwood. The Regiment

The Brigade also commands Reserve units that provide deployed contract support; 152 Fuel Support Regiment, 167 Catering Support Regiment, the Headquarters of the Expeditionary Forces Institute (EFI) and 148 (EFI) Squadron.





2nd Medical Brigade (2 Med Bde)

HQ Location	Strensall, North Yorkshire.
Role	The provision of Deployed Hospital Care (DHC) for Land Forces and Joint operations.
Composition	5 Regular and 12 Reserve units (approximately 460 Regular and 2450 Reservist personnel).

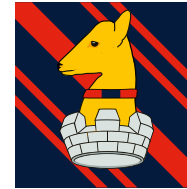
2nd Medical Brigade delivers Deployed Hospital Care (DHC), including Battle Casualty Replacements and Individual Augmentees, for current and contingent operations. The Brigade comprises of three Regular Field Hospitals, ten Reserve Field Hospitals, a Reserve Hospital Support Regiment, a Reserve Specialist Medical Evacuation Regiment and the Reserve Operational Headquarters Support Group.

The Brigade delivers the Very High Readiness Field Hospital and 335 Medical Evacuation Regiment, which provides specialist ground based care capabilities for critically ill patients. The Brigade also provides the Hospital Support Regiment that sustain niche surgical, clinical and nursing teams (such as Neurosurgical teams). The Army Medical Services

Training Centre ensures the high-training standards required of the hospitals and their staff.

The Army Medical Services (AMS) Operational Headquarters Support Group generates medical staff officers and support staff for HQ ARRC, and the Headquarters of both the Reaction and Adaptable Forces. In addition, the Group recruits and trains the AMS Reserve DHC component.

The Brigade has delivered significant hospital capability to recent operations in Iraq and Afghanistan. It has extensive experience in Force Generating complex hospital capabilities, which often operate in Joint and multi-national environments. It is also capable of providing specialist advice for Defence Engagement tasks.



1st Military Police Brigade (1 MP Bde)

HQ Location	Andover, Hampshire.
Role	The provision of the full spectrum of Military Policing support for Land Forces.
Composition	2 Regular and 5 Hybrid units (approximately 1500 Regular and 500 Reservist personnel).

1st Military Police Brigade will form up on 1 December 2014 and will comprise three Hybrid Military Police Regiments, each with two Regular and one Reserve sub-units, the Special Investigation Branch Regiment, the Regular Specialist Operations Unit and the Military Provost Staff Regiment (incorporating the Military Corrective Training Centre and the regional Service Custody Facilities). Provost Marshal (Army) will command the Brigade and, due to the requirement for investigative independence, the Brigade will be under the Operational Command of the Chief of General Staff and under the Tactical Command of Force Troops Command for non-investigative activity. Military Policing provides the Service

Justice System with an independent and effective investigating capability. It also provides a means of safely and securely holding personnel in Service Custody and Detention. The three Military Police Regiments and the Special Investigations Branch Regiment will be dispersed at sub-unit level to provide a geographical policing footprint centred on concentrations of Army personnel. The Specialist Operations Unit will provide a Close Protection capability as well as technical and specialist policing support. The Military Provost Staff Regiment will be based in Colchester and include the Military Corrective and Training Centre and the seven Regional Service Custody Facilities located across the UK.



The Security Assistance Group (SAG)

HQ Location	Hermitage, Berkshire.
Role	The provision of Soft Power and Soft Effect capabilities for Land Forces and to Other Government Departments.
Composition	4 Hybrid units and 1 Reserve unit (approximately 150 Regular and 270 Reservist personnel).

Security Assistance Group (SAG) will deliver the application of Soft Power at the strategic and operational levels and Soft Effect at the tactical level. The Brigade will be at the heart of providing persistent military engagement to achieve upstream prevention of conflict.

The SAG will form up on 1 September 2014 and will comprise the Military Stabilisation Support Group, 15 Psychological Operations Group, the Media Operations Group and the Security Capacity Building Team. It will have an embedded intelligence section linked to the Land Intelligence Fusion Centre.

The SAG will provide Force Elements to the Reaction and Adaptable Forces, and will be the principal Defence partner for

the Stabilisation Unit at the tactical level, contributing to the Coalition, Joint, Inter-agency, Inter-governmental and Multi-national approach. It will coordinate and deliver Military Capacity Building capacity through Mentoring, Advice, Support and Training, Military Assistance to Civil Effect and CIMIC.

The SAG will be the Army's focal point for Information Activities and Outreach (less OPSEC) bringing unity of command to specialist military Information Activity and Stabilisation Support (IA&SS). As the proponent for IA&SS, the SAG will deliver the Land Forces Specialist Training Centre, which will provide an appropriate context for collective training events and contribute to Mission Support and Exploitation.



Joint Ground Based Air Defence (Jt GBAD)

HQ Location	High Wycombe, Buckinghamshire.
Role	The provision of Ground Based Air Defence for Land Forces and Joint operations.
Composition	4 Regular units (approximately 920 Regular personnel).

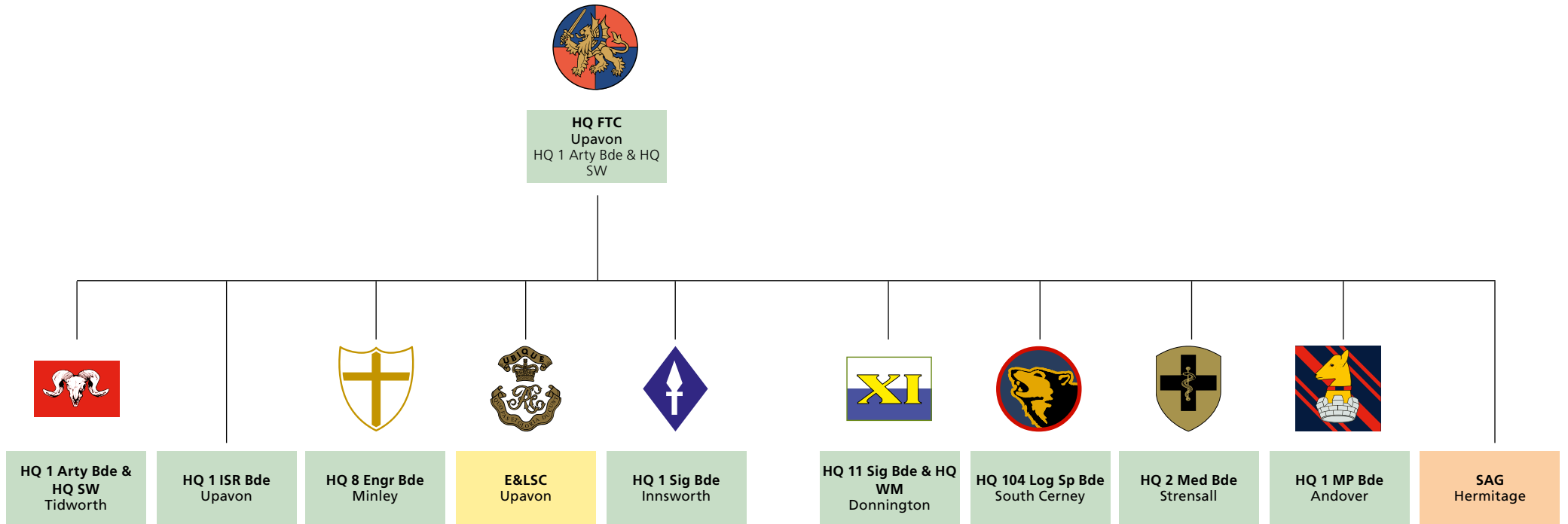
Joint Ground Based Air Defence (Jt GBAD) delivers for the UK's Ground Based Air Defence. It is also responsible for delivering the Air Picture to support operations in the Land Environment. Jt GBAD is under the Operational Command of Headquarters Air Command and under the Coordinating Authority of Force Troops Command.

16th Regiment provide the resident Rapier Battery to the Standing Military Task in the Falkland Islands. 12th Regiment Royal Artillery will be equipped with three Self-Propelled High Velocity Missile (SP HVM) Batteries aligned to

the Reaction Force, and a Lightweight Multiple Launcher HVM (LML HVM) light role Battery. 106 (Yeomanry) Regiment is also equipped with SP HVM.

49 Battery is manned by both Army and Royal Air Force personnel. It provides the Land Environment Air Picture Provision capability, which generates and disseminates a comprehensive view of all aircraft in flight to enable Battle-space Management. The Battery also operates the Giraffe-Agile Multi Beam (G-AMB) radar, which provides a Sense and Warn capability to detect rockets fired at range.

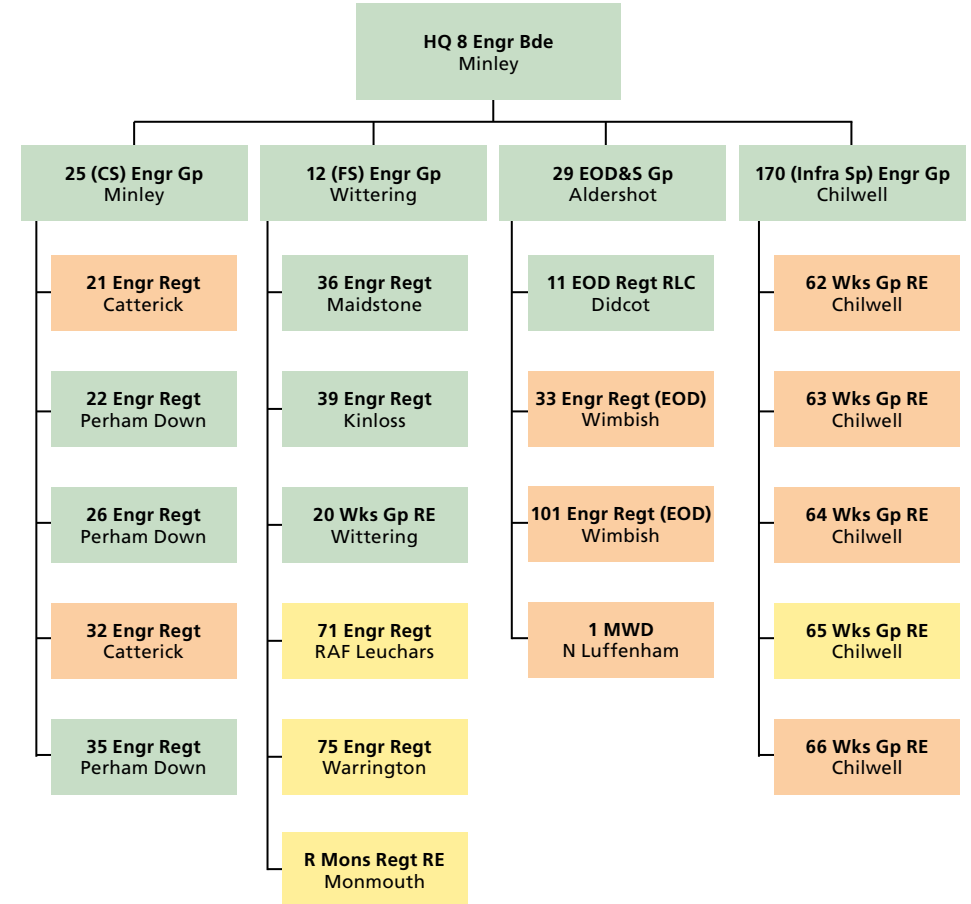
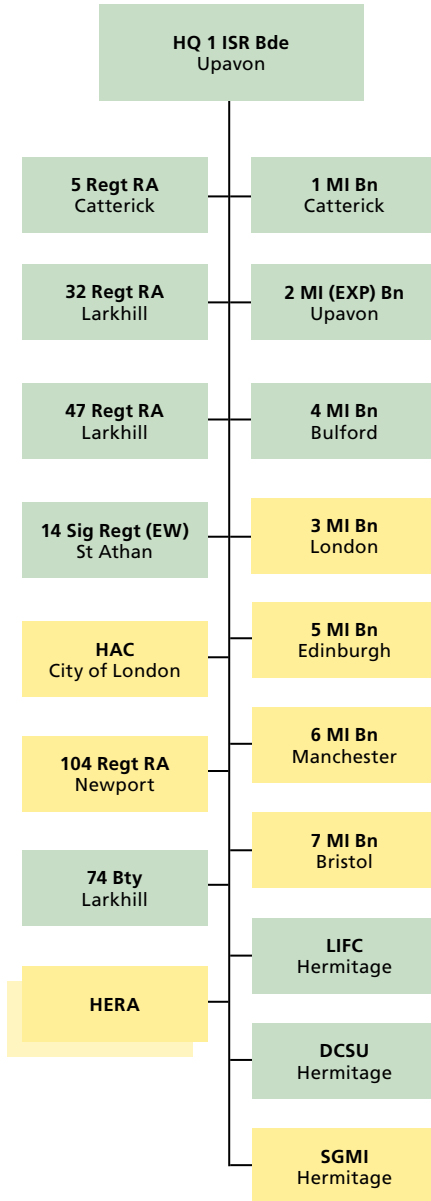
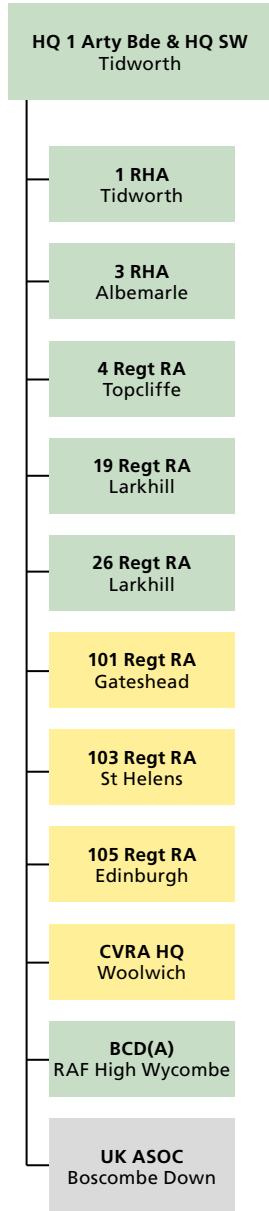
Structure - Overview



Jt GBAD
High Wycombe

Key

- Regular Unit
- Regular Unit with Reserve Elements
- Reserve Unit
- Unit not under Operational Command or Control



Key

- Regular Unit
- Regular Unit with Reserve Elements
- Reserve Unit
- Unit not under Operational Command or Control



E&LSC
Upavon



HQ 1 Sig Bde
Innsworth

- 22 Sig Regt
Stafford
- 30 Sig Regt
Bramcote
- ARRC Sp Bn
Innsworth
- 299 Sig Sqn (SC)
Bletchley
- HQ ARRC
(Brit Elm)
Innsworth



HQ 11 Sig Bde & HQ WM
Donnington

- HQ 2 Gp**
 - 10 Sig Regt
Corsham
 - 15 Sig Regt (IS)
Blandford
 - 32 Sig Regt
Glasgow
 - 37 Sig Regt
Redditch
 - 39 Sig Regt
Bristol
 - 71 (Y) Sig Regt
Bexleyheath
- HQ 7 Gp**
 - 1 Sig Regt
Stafford
 - 2 Sig Regt
York
 - 3 Sig Regt
Bulford
 - 16 Sig Regt
Stafford
 - 21 Sig Regt
Colerne



HQ 104 Log Sp Bde
South Cerney

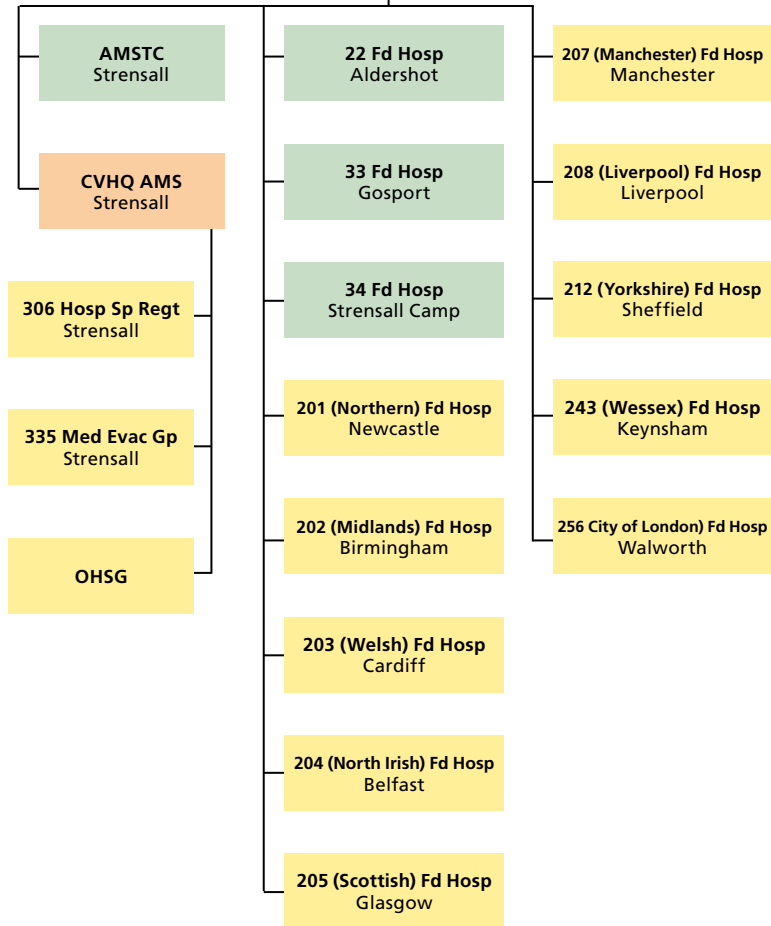
- 2 Op Sp Gp RLC**
Grantham
 - 152 Fuel Sp Regt RLC
Belfast
 - 162 PC&MC Regt RLC
Nottingham
 - 165 Port Regt RLC
Plymouth
 - 167 Cat Sp Regt RLC
Grantham
- 17 P&M Regt RLC
Marchwood
- 29 Regt RLC
South Cerney
- 1 Log Sp Gp RLC
Grantham
- 3 Log Sp Gp RLC
Grantham
- 5 Trg Regt RLC 39
Sp Sqn
Grantham
- HQ EFI & 148 (EFI)
Sqn RLC
Grantham

Key

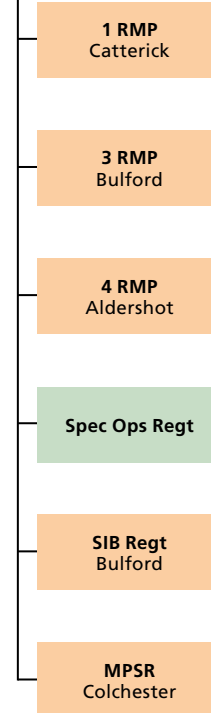
- Regular Unit
- Regular Unit with Reserve Elements
- Reserve Unit
- Unit not under Operational Command or Control



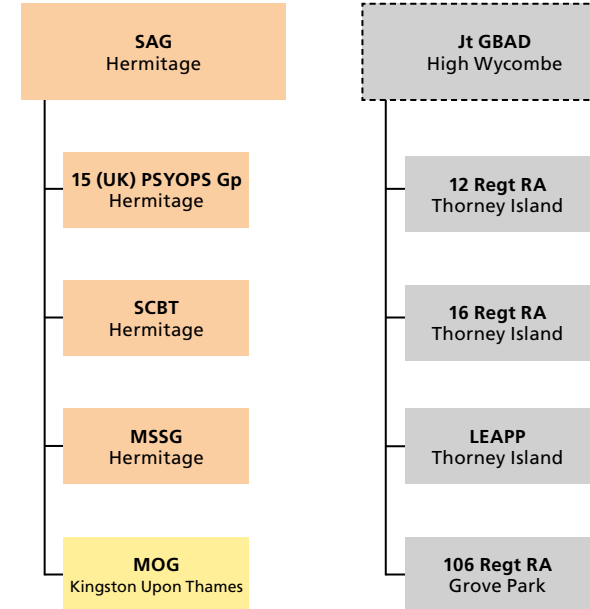
HQ 2 Med Bde
Strensall



HQ 1 MP Bde
Andover



Jt GBAD
High Wycombe



- Key**
- Regular Unit
 - Regular Unit with Reserve Elements
 - Reserve Unit
 - Unit not under Operational Command or Control



Definitions

Regional Point of Command (RPOC)

The Regional Points of Command are responsible for delivering the Firm Base outputs as part of an integrated brigade structure. The Firm Base has developed into a recognised and useful concept in both military and civilian communities and is defined as “a secure home front that sustains the Army, enables training for and deployment on operations, and ensures the support of the public and host nations” (Adaptable Force Concept of Employment).

Defence Engagement (DE)

Defence Engagement, from an Army perspective, encompasses activity conducted in periods of relative stability that enhances the nation’s relationships with others and creates the conditions for longer-term security. The Army’s intent in supporting Defence Engagement activity is firmly in support of the MOD’s efforts through its International Policy and Plans (IPP) and NATO-European Policy (NEP) Directorates (Adaptable Force Concept of Employment).

Information Activity and Stabilisation Support (IA&SS)

- **Information Activities** are defined as “actions designed to affect information or information systems. They can be performed by any actor and include protective measures.” (Allied Joint Publication 3.10).
- **Stabilisation** is the process that supports States which are entering, enduring or emerging from conflict, in order to prevent or reduce violence; protect the population and key infrastructure; promote political processes and governance structures, which lead to a political settlement that institutionalises non-violent contests for power; and prepares for sustainable social and economic development (Joint Doctrine Publication 3-40).

